

THE PERFECT ADDRESS FOR YOUR BUSINESS

*Signature 7*

A C O M M E R C E H U B

A Project By



*Creating Landmarks. Building Trust.*

ENJOY THE LUCKY CHARM OF 7  
and take your Business to New Heights.



# Signature 7

## About Us

With the successful completion and handover of our iconic residential project "7 Clouds" at Kachimet, Signature Spaces has established its promise of quality, timely delivery, and customer trust.

Driven by a vision to create landmark development, we present "Signature-7" - an ultramodern seven storey commercial hub in the heart of the city crafted for business and investors who value location, visibility, design and growth.

Inspired by the power of 7 - a symbol of luck prosperity and success - Signature-7 is set to become the city's next commercial landmark.

Be a part of tomorrow's landmark today - invest in Signature-7 before opportunity becomes history.



## WORLD CLASS AMENITIES



Two High Speed Lifts  
with Auto Rescue Device  
( 8 to 10 persons).



Allotted Car  
Parking.



Common Toilets  
on All Floors.



Generator Power Backup for  
Common Utility Area.



Three Phase Power  
Supply to Each Office.



Stunning  
Building Facade



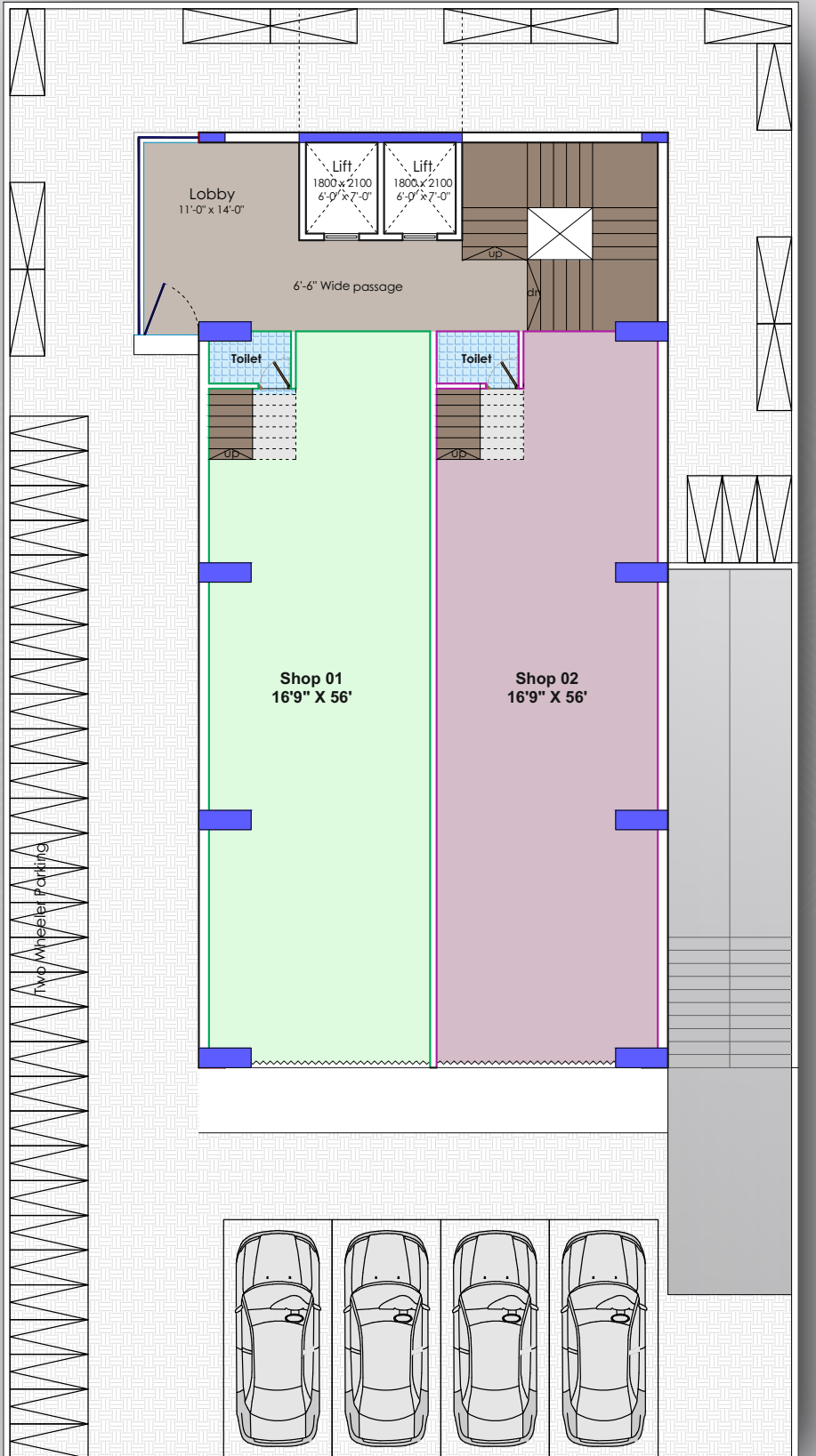
CCTV Camera & Security  
System for all Common Areas.



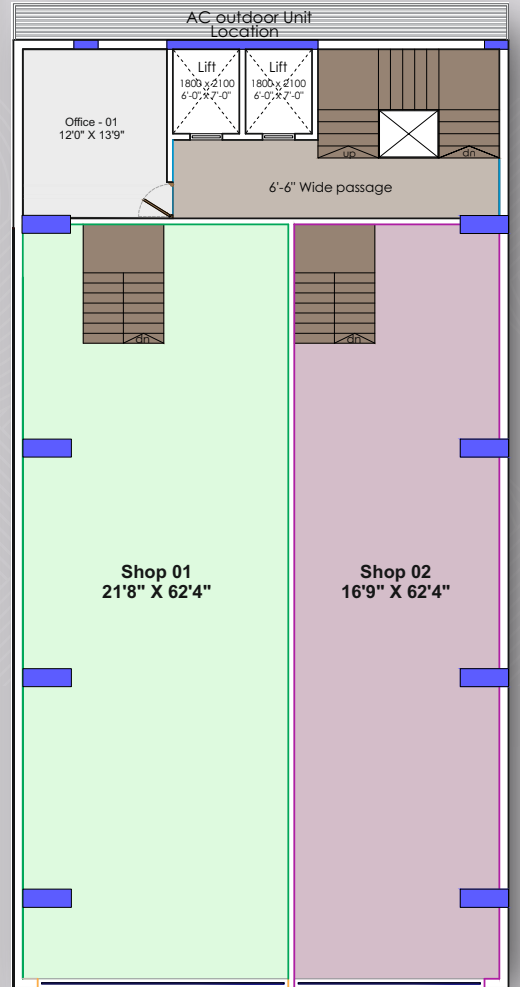
Fire Safety System  
as per N.M.C norms

# TYPICAL FLOOR PLAN

## GROUND FLOOR



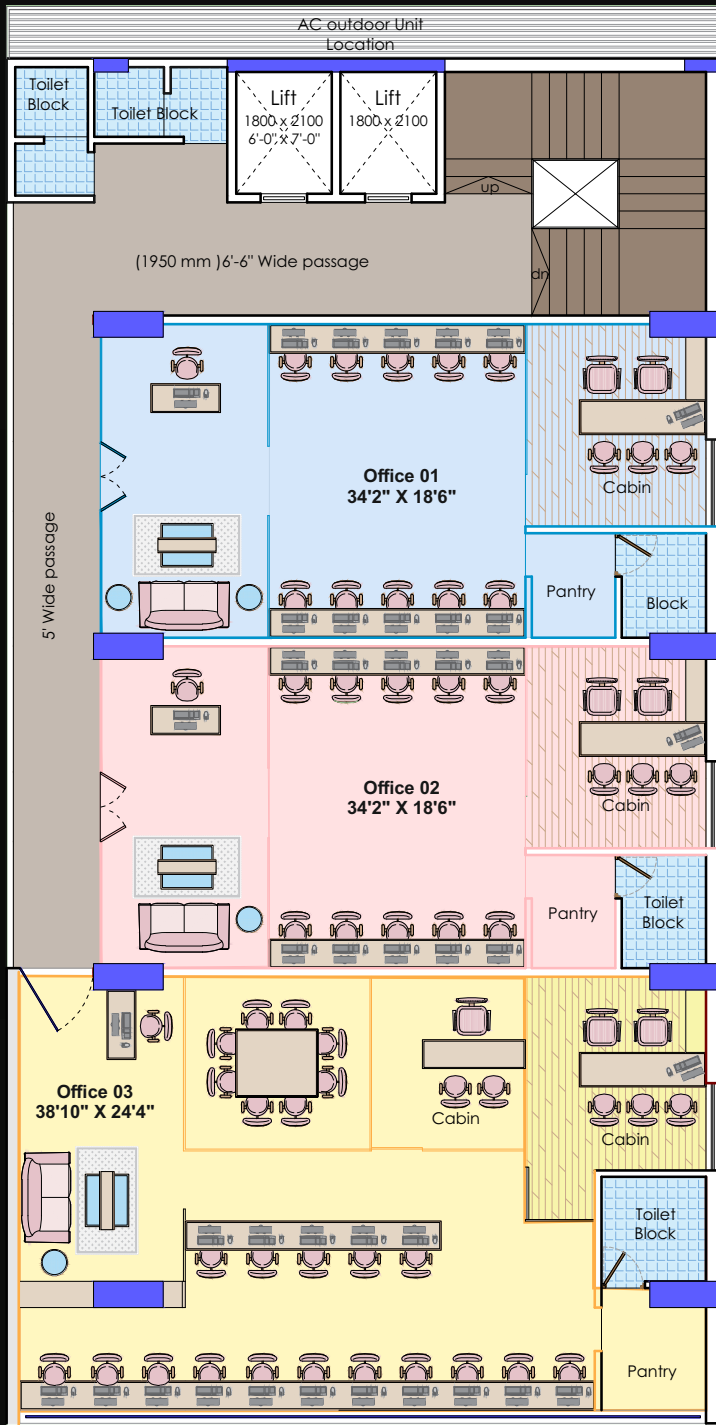
## 1<sup>ST</sup> FLOOR



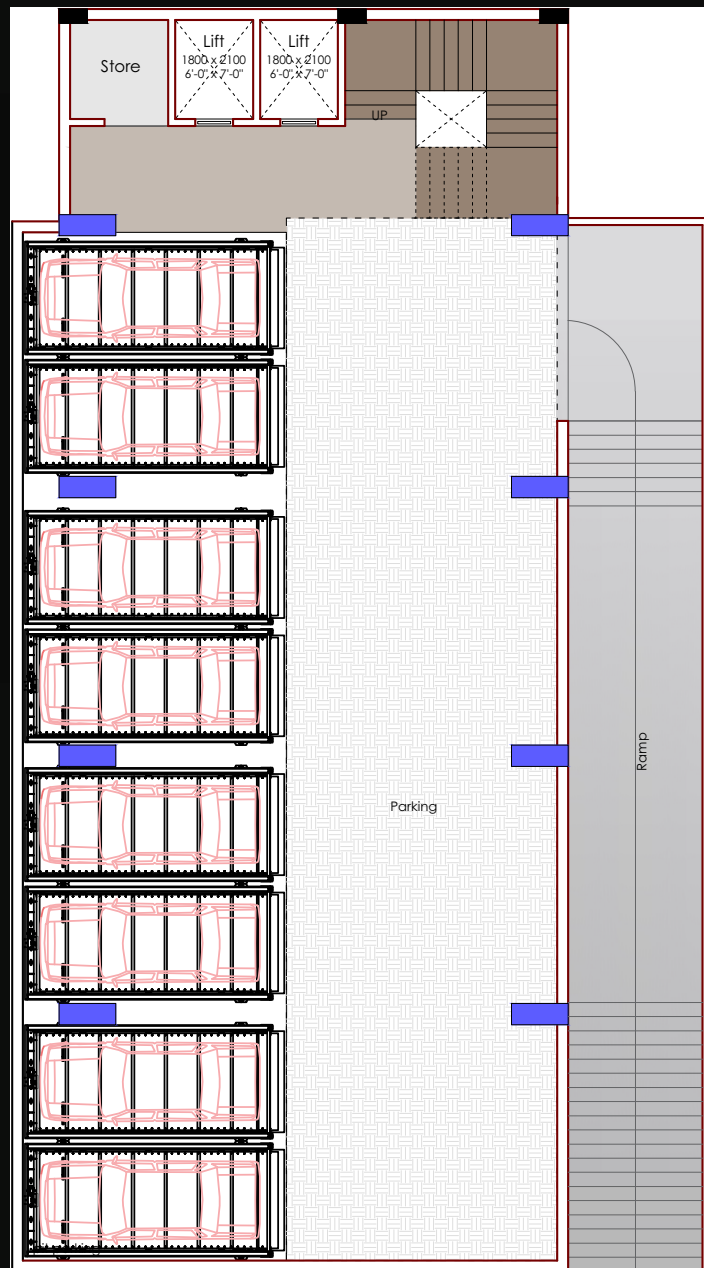
PARTICULAR	SHOWROOM 1	SHOWROOM 2	OFF 01
GROUND FLOOR (P LINE)	1010	1010	-
1ST FLOOR (P LINE)	1440	1125	142
TOTAL (P LINE)	2450	2135	-
SUPER BUILD UP	3773	3288	220

# TYPICAL FLOOR PLAN

## 2<sup>ND</sup> TO 5<sup>TH</sup> FLOOR



## PARKING LOT

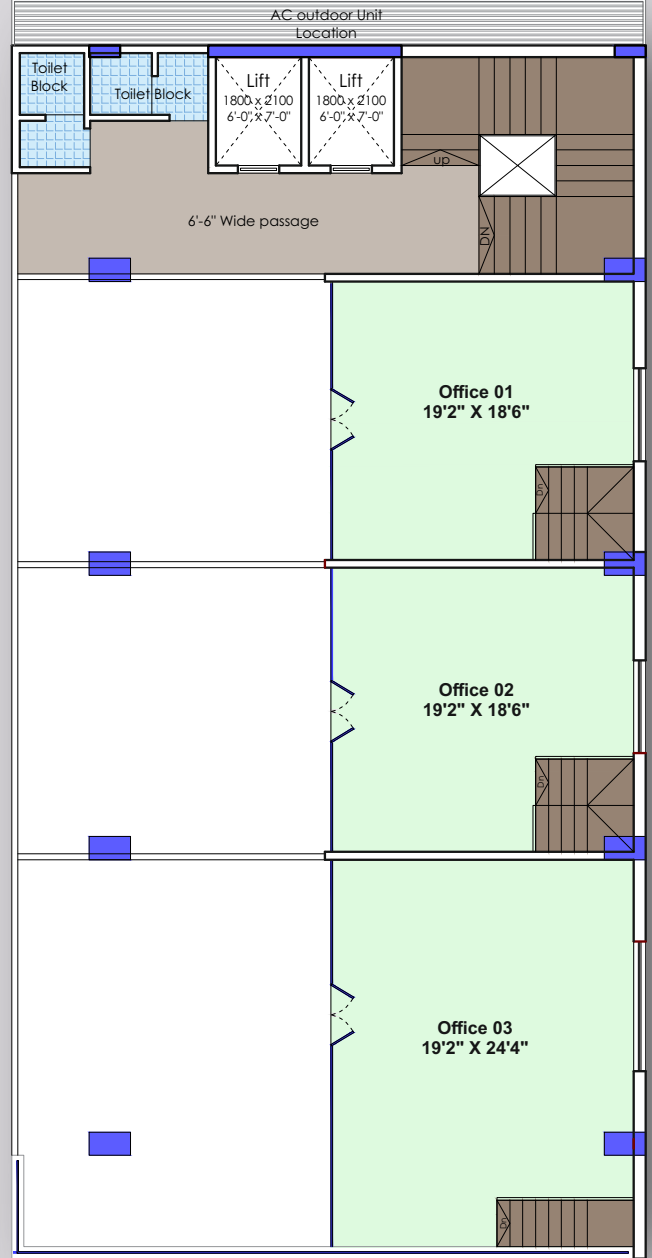
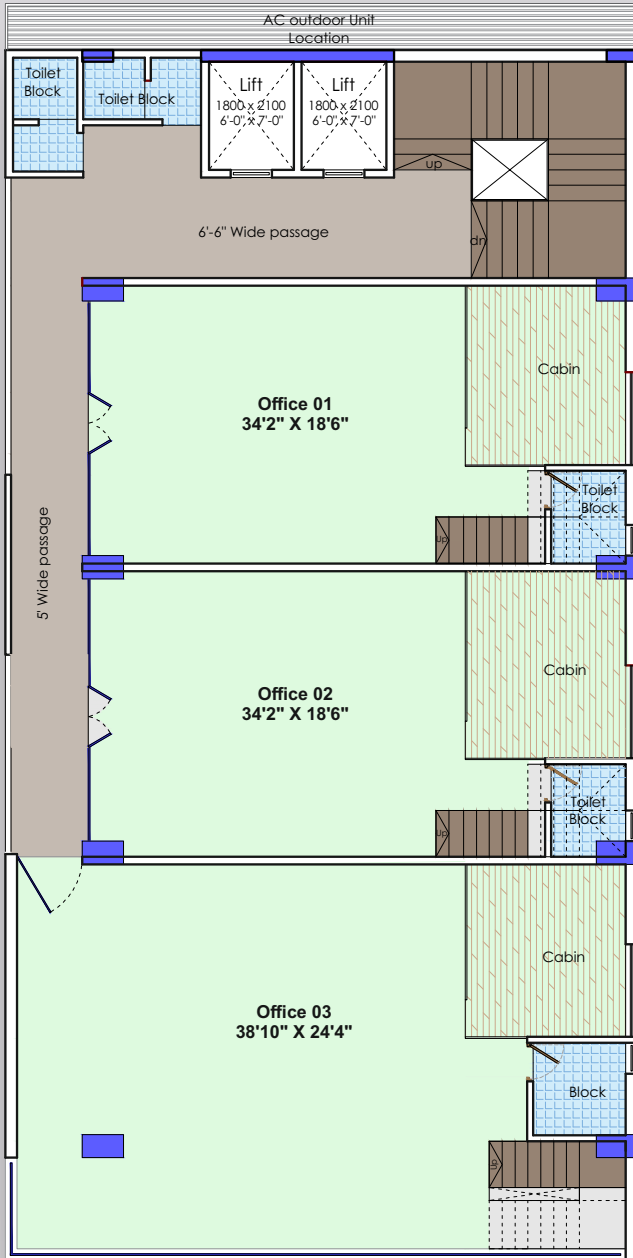


UNIT NO.	TOTAL P- LINE AREA	SUPER B/UP AREA
	sq.ft. area	sq.ft. area
OFFICE- 01	673	1036
OFFICE- 02	673	1036
OFFICE- 03	1023	1575

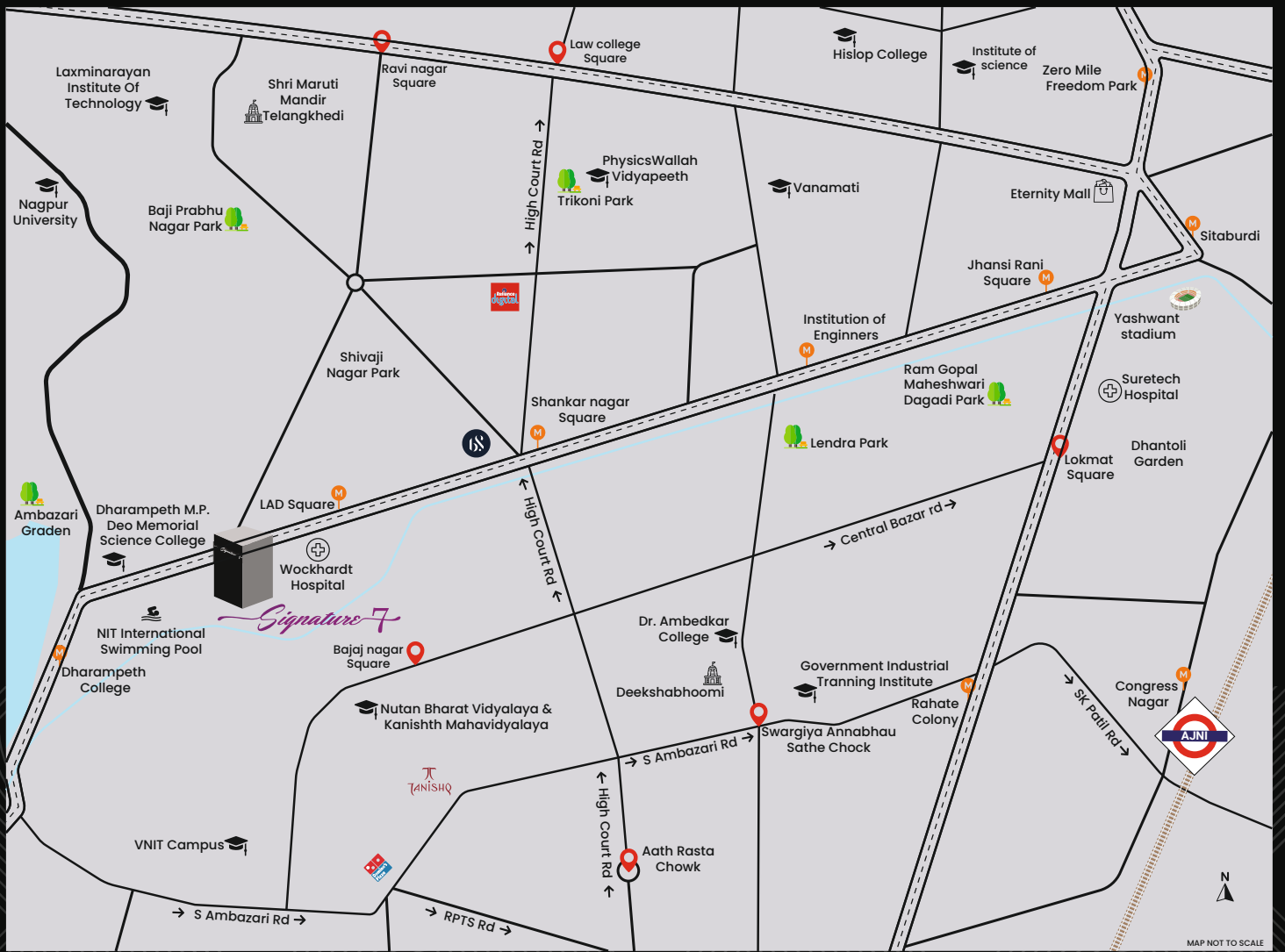
# TYPICAL FLOOR PLAN

## LOWER 6<sup>TH</sup> FLOOR

## UPPER 6<sup>TH</sup> FLOOR



UNIT NO.	P-LINE AREA		TOTAL P-LINE AREA	SUPER B/UP AREA
	LOWER 6 <sup>TH</sup> FLOOR	UPPER 6 <sup>TH</sup> FLOOR		
	sq.ft area	sq.ft area	sq.ft area	sq.ft area
OFFICE - 01	673	413	1086	1672
OFFICE - 02	673	413	1086	1672
OFFICE - 03	1023	538	1561	2404



## LOCATION MAP

Scan to view the location



### SHOPPING MALLS

- Lotus Electronic Mall 02 Mins
- Lifestyle 05 Mins
- Centro Mall 05 Mins
- Reliance Digital 05 Mins

### COLLEGES

- LAD College & Smt. Ratnidevi Purohit 02 Mins
- Dharampeth M.P. Deo Memorial Science College 02 Mins
- VNIT College 01 Min

### PETROL PUMP

- Bharat Petroleum 05 Mins
- IndianOil 04 Mins
- HP Petrol Pump 05 Mins

### NEAREST METRO STATION

- LAD Square 02 Mins (Walking Distance)
- Dharampeth College 05 Mins

### HOSPITAL

- Wockhardt Super Specialty Hospital 05 Mins
- GB Multicare Hospital 05 Mins

### BANKS

- ICICI BANK 05 Mins
- HDFC BANK 05 Mins
- BOI 03 Mins



**Promoters:** Mehul Zunzunwala, Rahul Zunzunwala , Kapil Wadhwa

**PROJECT BY**

**Architect**  
Terrain Design Studio  
Ar. Pankaj Kriplani

**Legal Consultant**  
Adv. Sandeep Shastri

**Structural Engineer**  
Uttrawar Associates



+91-9359 223 472

f & @Signature Spaces

**Head Office:** Signature Spaces, G4, Sai Complex, Bharatnagar Square,  
Amravati Road, Nagpur

**Site Address:** Signature 7, Plot no 6, Daga Layout, North Ambazari Road, Near LAD Metro Station,  
Nagpur, 440033

Disclaimer: All plans, drawings, amenities, features, specifications, other information, etc. mentioned are indicative of the kind of development that is proposed and are subject to the approval of the respective authorities. All renderings, floor plans, pictures, perspective views of buildings and model furnished apartments and maps are the artist's conceptions and not actual buildings, or landscaping. Information given in this advertisement is not final or legally binding and is liable to change. Final discretion remains with the Developers.



Maha RERA NO.  
PC1190002502914  
<http://maharera.mahaonline.gov.in>